

MONTHLY MEMBERSHIP PROGRESS REPORT

LOCATION NEW YORK

District 20 R1

Results as of: 1/31/2023

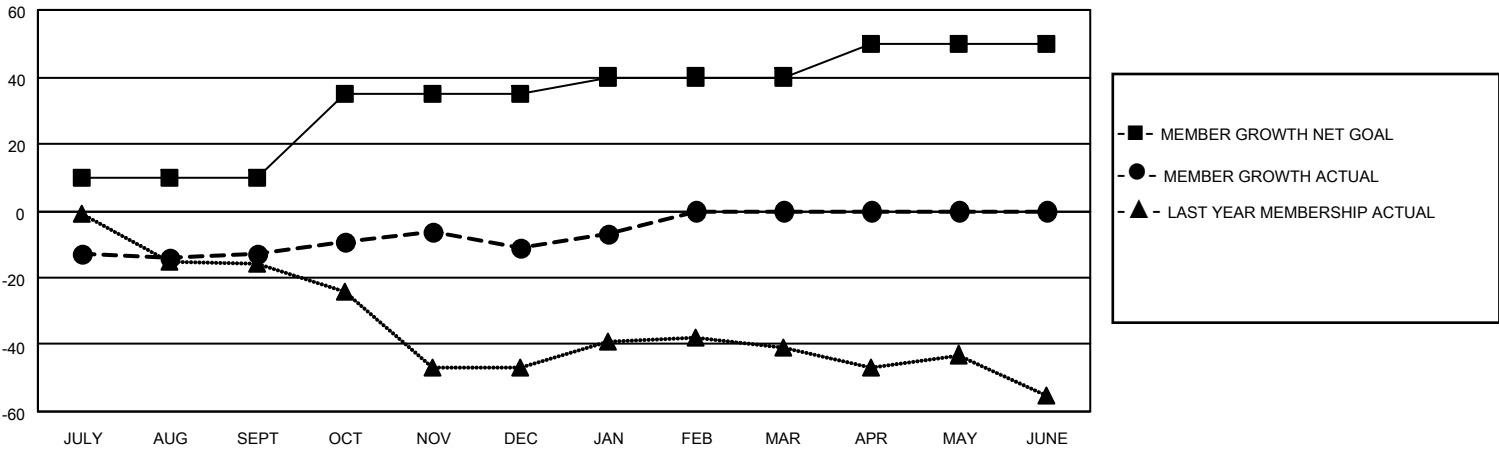
Clubs			
RESULTS FOR 2022-2023			
QUARTER	NEW CLUB GOAL	NEW CLUBS	DROPPED CLUBS
JULY/AUG/SEPT	0	0	0
OCT/NOV/DEC	1	0	0
JAN/FEB/MAR	0	0	0
APR/MAY/JUNE	0	0	0

Members			
RESULTS FOR 2022-2023			
QUARTER	MEMBER GROWTH NET GOAL	MEMBER GROWTH ACTUAL	DROPPED MEMBERS ACTUAL (including transfers)
JULY/AUG/SEPT	10	6	17
OCT/NOV/DEC	25	11	8
JAN/FEB/MAR	5	9	3
APR/MAY/JUNE	10	0	0

GOALS AND ACTUAL NEW CLUBS CUMULATIVE



GOALS AND ACTUAL MEMBERS CUMULATIVE



DROPPED CLUBS: 0

8 CLUBS OF 28 ADDED 1 OR MORE NEW MEMBERS

GENDER DISTRIBUTION

MALE	415 (59.80%)
FEMALE	279 (40.20%)
NON BINARY	0 (0.00%)
PREFER NOT TO ANSWER	0 (0.00%)

DROPPED MEMBERS

[CLICK HERE FOR CUMULATIVE MEMBERSHIP DATA](#)

DECEASED	0
CLUB CANCELLED	0
OTHER	28
TOTAL	28

TOTAL FAMILY UNIT MEMBERS 125

FAMILY MEMBERS PAYING HALF DUES 65